

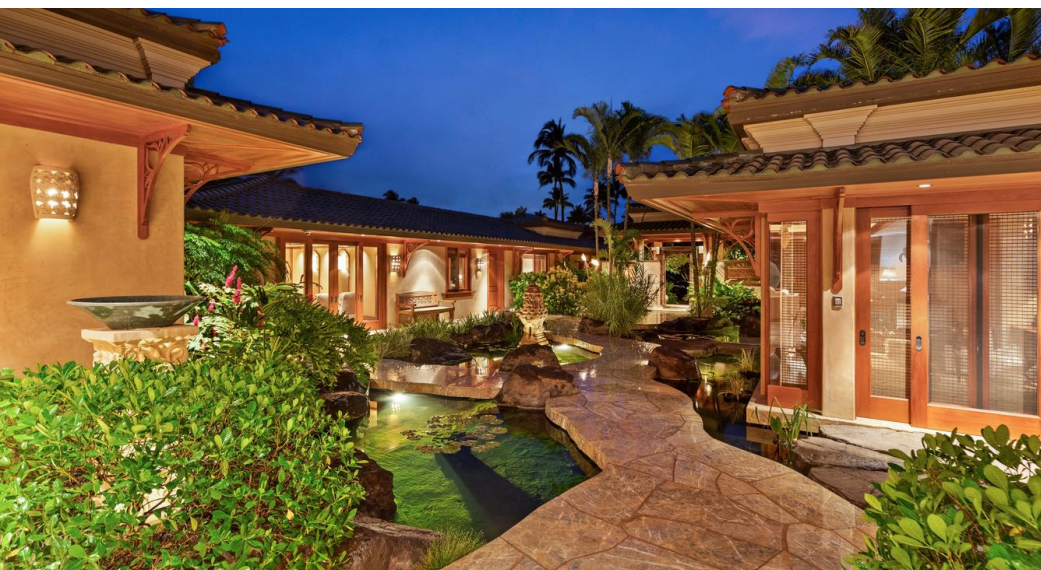


KELLERWILLIAMS
Luxury
INTERNATIONAL

Honu Pani

68-1015 Pauoa Way Kamuela, HI 96743





Situated on over an acre of exquisitely manicured oceanfront land within the private, gated neighborhood called Pauoa Beach, inside the Mauna Lani Resort, Honu Pani affords guests absolute exclusivity.

Guests enter the home through an exotic Indian door that reflects the peaceful setting at the heart of the property. You are welcomed by the sounds of a waterfall cascading over lava rock and a network of stone walkways meandering over koi ponds and lily pads. Tiki torches add an evocative Hawaiian cultural element to the magical garden setting. The blend of South Asian and Hawaiian cultural themes is evident throughout the home, from the incredible teak woodwork to the decorative details that give the home its unique charm.

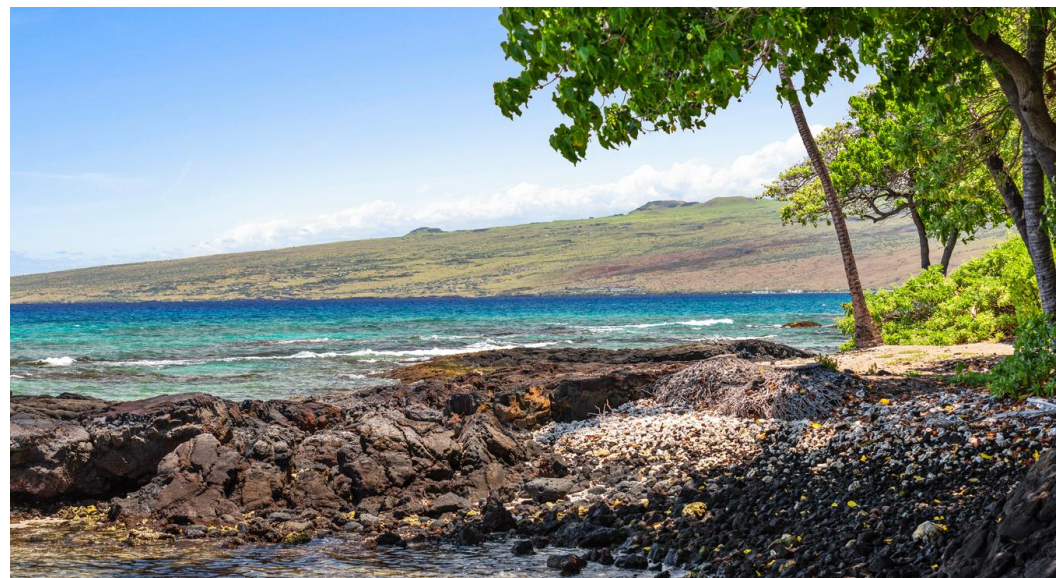
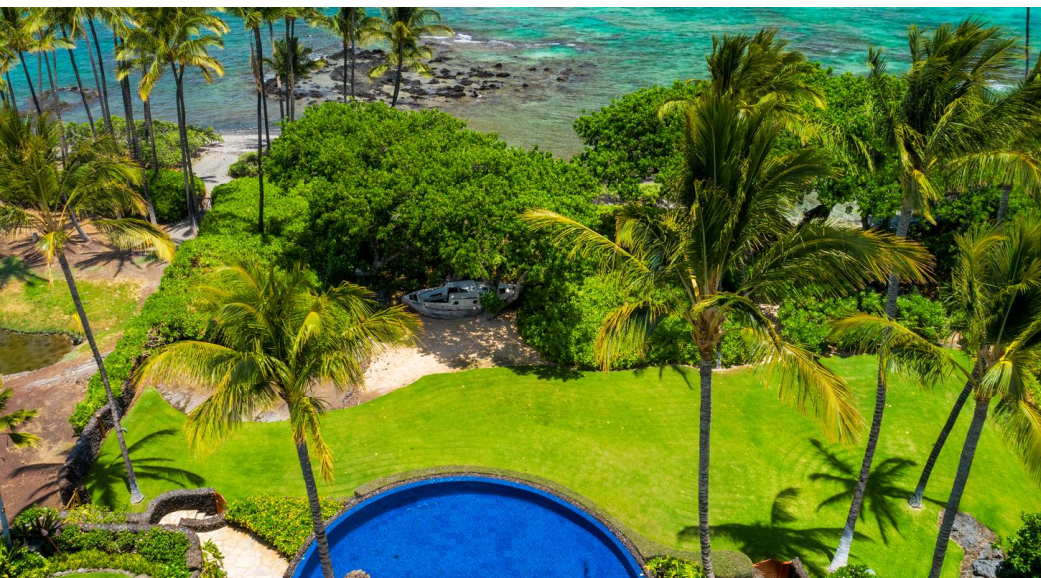




Beyond the entry garden, a wall of sliding glass doors can be opened to allow seamless access to the home's main living area and gracious Hawaiian-style indoor-outdoor living. The spacious great room boasts high ceilings and a large sectional sofa and a dining area. Sliding glass doors on the ocean-side of the home open to connect with the covered lanai overlooking the midnight-blue tiled infinity-edge pool and the Pacific Ocean just beyond. With both sets of glass doors open, the home has a delightful flow from the front gate to the pool.

The kitchen is positioned off the central living room and includes a dining area and sliding wood-trimmed doors that open to the lanai, pool and barbecue area.





The infinity-edge pool just off the main living area is positioned to savor the views of the lush backyard and Pacific beyond. Pool heating ensures the water will always be comfortable. Totally private, the only sounds are those of birds and the soft rumble of waves lapping the lava rocks on the shoreline. A jetted tub and fire feature sit adjacent to the pool.

Honu Pani has a gorgeous lawn that runs up to the ancient Hawaiian "Queen's Bath" and trees that form the blind between home and the oceanfront. A private gate allows access to the beach path that runs along the ocean to the Fairmont Hotel beach, which is ideal for snorkeling and swimming.





The home's five bedrooms are separated from each other to allow for guest privacy. Each bedroom features an en-suite bathroom and outdoor shower. The master bedroom, located off the living room, boasts ocean views and glass doors that open to a private sitting area overlooking the backyard and the sparkling Blue Pacific just beyond. A private garden, which has an outdoor shower and mediation/yoga platform with a thatched roof, is the perfect space to start a day in paradise.

The additional four guest rooms are located on the two wings that flank the entry garden at the center of the home. Three guest rooms are positioned on one side of the garden and the fourth is located opposite.



Honu Pani's amenities include a fabulous eight-seat theater with plush seats and drink holders.

A unique perk for guests of Honu Pani is access to the neighborhood's private beach club. Located a short walk from the home, the Pauoa Beach Club features resort-class exercise and relaxation facilities.

Honu Pani, 68-1015 Pauoa Way Kamuela, HI 96743

- Oceanfront in the Exclusive, Gated Neighborhood of Pauoa Beach, Inside the Mauna Lani Resort.
- 1.29-Acre Lot.
- 6,992 Sq. Ft. Interior Living Space; 1,332 Sq. Ft. Lanai.
- 5 Bedrooms with 5 En-suite Bathrooms & Outdoor Showers; 4 Half-Baths.
- Gated Access to the Beach Path.
- Exotic Teak Finishes & Custom Mahogany Pocket Doors.
- Koi Ponds and Water Gardens.
- Infinity-Edge Pool and Jetted Spa with Fire Feature.
- Covered Lanai & Built-in Barbecue.
- A Lucky Bennett Designed Residence.

Exclusive Amenities

- Access to the Private Pauoa Beach Club: Gym, Pool, Massage Area& Kitchen.
- Use & Charging Privileges & Fairmont Orchid Hotel.





THE HAWAII TEAM

Keller Williams Realty Maui- Big Island - RB 21851

Dan Polimino RB-22894

Principal Office: 285 W Kaahumanu Ave, Ste #201

Kahului, HI 96732

Ph.:808-270-1046

Branch Office: 73-5619 Kauhola St. Ste 208,

Kailua Kona, HI 96740

Ph: 808-930-5900

